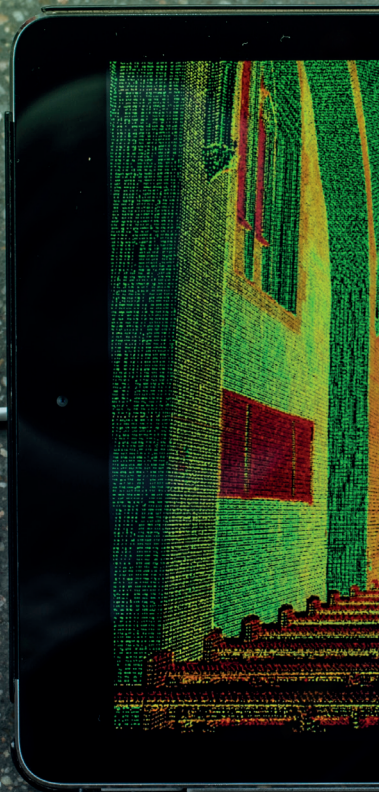
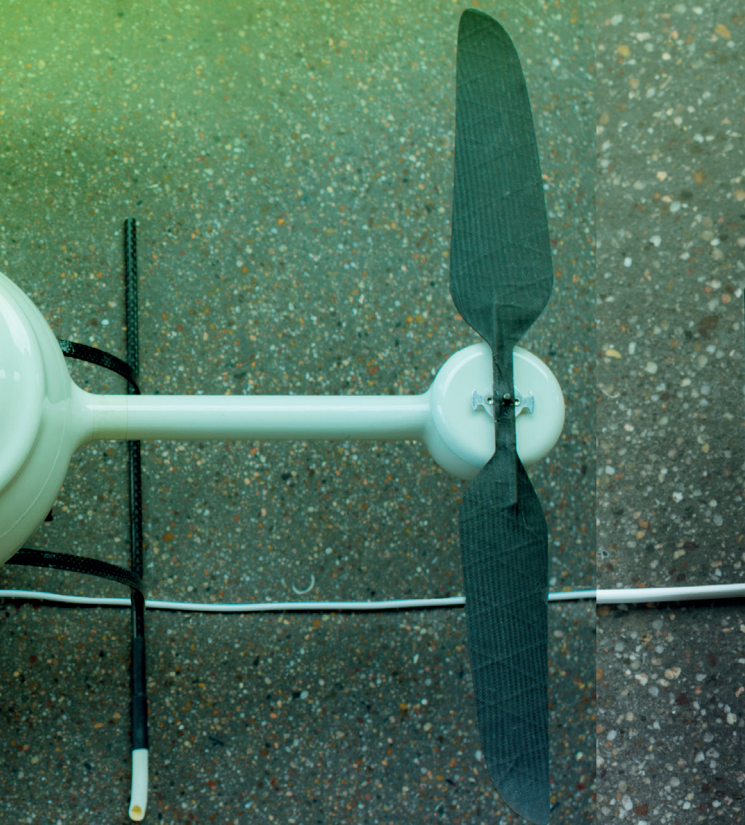


GEOINFORMATICS & SURVEYING

Bachelor of Science



ENGINEERING
HOCHSCHULE MAINZ
UNIVERSITY OF
APPLIED SCIENCES

PROGRAM OBJECTIVES

What do Galileo, Google Earth, and navigation systems have in common? They all work with the geodetic spatial reference systems. You will learn what this means and how it works in the Geoinformatics and Surveying bachelor's degree program. The program teaches you how to use various measurement methods, such as tacheometry, GPS, photogrammetry, and remote sensing. You will also learn how to process and analyze the data obtained in this way, for example by using modern geoinformation systems (GIS).

PROGRAM STRUCTURE

In the first four semesters you will be introduced to the basics of surveying and geoinformatics. In the following semesters, you can focus on one of the two directions through your required elective modules and strengthen the knowledge you have gained with practical experience in a practical project and a bachelor's thesis.

PROSPECTS

As an engineer specializing in geoinformatics and surveying, you will be proficient in the precise surveying of structures and objects, as well as in software and app development, the use of databases, and the computer-aided construction of maps and plans. You can also use your knowledge in regional land use planning.

AT A GLANCE

When to start

Winter or summer semester

Standard period of study

6 semesters, full-time

Requirements

For more information, go to hs-mz.de/applying

Contact us

guv@hs-mainz.de

+49 (0) 6131 628-1439 oder -1499

For more information

Exchange students:

hs-mainz.de/studium/services/technik/incoming/

Degree-seeking students:

kennnenlernen.hs-mainz.de

<http://hs-mz.de/geoinformatics>

